

Ambulatory Surgical Center Quality Reporting Specifications Manual

Release Notes Version 11.0

Release Notes Completed: 05/01/2021

Guidelines for Using Release Notes

These Release Notes provide modifications to the Ambulatory Surgical Center Quality Reporting (ASCQR) Program Specifications Manual. They are provided as a reference tool and are not intended to be used as program abstraction tools. Please refer to the ASCQR Program Specifications Manual for the complete and current technical specifications and abstraction information.

The notes are organized to follow the order of the Table of Contents. Within each topic section, a row represents a change that begins with general changes and is followed by data elements in alphabetical order. The **implementation date is 01/01/2022**, unless otherwise specified. The row headings are described below:

- **Impacts** – Used to identify which portion(s) of the Manual Section is impacted by the change listed. Examples are Measure Information Forms, Quality Data Coding and Sampling Specifications, and Appendix A.
- **Rationale** – Provided for the change being made.
- **Description of Changes** – Used to identify the section within the document where the change occurs. Examples are Definitions, Numerator, and Denominator.

The notes in the tables below are organized to follow the Table of Contents in the Specifications Manual.

Measure Information Forms

Impacts: ASC-11

Rationale: Correcting typographical errors that are in the list of codes used to identify the denominator cases.

Description of Change:

Denominator Criteria (Eligible Cases)

Change from: CPT (without modifiers [55, 56]): 66840, 66850, 66852, 66920, 66930, 66940, 66982, 66983, 66984, [66987, 66988]

Change to: CPT (without modifier 55 or 56): 66840, 66850, 66852, 66920, 66930, 66940, 66982, 66983, 66984, 66987, 66988

Impacts: ASC-12

Rationale: Correcting language edits for payment determination year 2024 and to specify the modification in measure performance period and included populations due to CMS's COVID-19 Data Waiver.

Description of Change:

Introduction

Change from: CMS will use the measure results in the Ambulatory Surgical Center Quality Reporting (ASCQR) Program for payment determination in calendar year 2023. Beginning with payment determination year, 2020, CMS will calculate the measure with three years of claims data. For payment determination year 2023, the performance period is January 2019 through December 2021.

Change to: CMS will use the measure results in the Ambulatory Surgical Center Quality Reporting (ASCQR) Program for payment determination in calendar year 2024. Beginning with payment determination year, 2020, CMS began calculating the measure with three years of claims data. For payment determination year 2024, the performance period is January 2020 through December 2022. This performance period has been shortened to exclude data for services occurring from January – June 2020 in accordance with the CMS COVID-19 Data Waiver.

Change from:

Change to: <https://qualitynet.cms.gov/asc/measures/colonoscopy/methodology>

Included Populations

Change from: Medicare FFS beneficiaries with an outpatient colonoscopy are included if the patient has been enrolled in Part A and Part B Medicare for the 12 months prior to the date of procedure to ensure a full year of administrative data for risk adjustment.

Change to: Medicare FFS beneficiaries with an outpatient colonoscopy are included if the patient has been enrolled in Part A and Part B Medicare for up to 12 months prior to the date of procedure to ensure the availability of administrative data for risk adjustment.

Impacts: ASC-13

Rationale: Recently published systematic review supports the measure as currently specified. Minor grammatical changes help to improve interpretation of measure guidance and add new reference.

Description of Change:

Description

Change from: This measure is used to assess the percentage of patients having surgical procedures under general or neuraxial anesthesia of 60 minutes or more in duration are normothermic within 15 minutes of arrival in PACU.

Change to: This measure is used to assess the percentage of patients having surgical procedures under general or neuraxial anesthesia of 60 minutes or more in duration who are normothermic within 15 minutes of arrival in PACU.

Data Element Definitions

Measure ascertains response to the following question:

Change from: What is the percentage of having surgical procedures under general or neuraxial anesthesia of 60 minutes or more in duration are normothermic within 15 minutes of arrival in PACU?

Change to: What is the percentage of patients having surgical procedures under general or neuraxial anesthesia of 60 minutes or more in duration who are normothermic within 15 minutes of arrival in PACU?

References

Add new reference citation.

Impacts: ASC-17

Rationale: Revised instructions to note that stakeholder inquiries need to be sent via ServiceNow.

Description of Change:

Introduction

Change from: Questions and comments about the measure should be directed to ascmeasures@yale.edu.

Change to: Please submit questions about the measure to the *QualityNet* Question and Answer Tool: https://cmsqualitysupport.servicenowservices.com/qnet_qa.

Rationale: Minor edits to language to accommodate for the impact on performance periods due to CMS COVID-19 Data Waiver.

Description of Change:

Included Populations

Change from: The target population is Medicare FFS patients aged 65 years and older undergoing outpatient orthopedic surgeries at ASCs who have been enrolled in Part A and Part B Medicare for the months prior to the date of surgery to ensure adequate data for identifying comorbidities for risk adjustment.

Change to: The target population is Medicare FFS patients aged 65 years and older undergoing outpatient orthopedic surgeries at ASCs who have been enrolled in Part A and Part B Medicare for up to 12 months prior to the date of surgery to ensure the availability of data for identifying comorbidities for risk adjustment.

Rationale: Update the directions for locating procedure codes in the measure cohort.

Description of Change:

Included Populations

Change from: For a list of procedure codes included in the measure cohort, see: [Qualitynet.org](https://qualitynet.org) > Ambulatory Surgical Centers > Measures > Orthopedic Measure Dry Run > Measure Methodology.

Change to: For a list of procedure codes included in the measure cohort, see: <https://qualitynet.cms.gov/> > Ambulatory Surgical Centers > Measures > Orthopedic Measure > Methodology.

Rationale: Remove reference to ICD-9 CM.

Description of Change:

Risk Adjustment

Remove: All references to ICD-9 CM within the Measure Information Form.

Impacts: ASC-18

Rationale: Update the directions for locating procedure codes in the measure cohort.

Description of Change:

Included Populations

Change from: The target population is Medicare FFS patients aged 65 years and older undergoing outpatient orthopedic surgeries at ASCs who have been enrolled in Part A and Part B Medicare for the months prior to the date of surgery to ensure adequate data for identifying comorbidities for risk adjustment.

Change to: The target population is Medicare FFS patients aged 65 years and older undergoing outpatient orthopedic surgeries at ASCs who have been enrolled in Part A and Part B Medicare for up to 12 months prior to the date of surgery to ensure the availability of data for identifying comorbidities for risk adjustment.

Rationale: Updating Table 1 for Risk adjustment variables to reflect additional patient-level variables for ASC-18 Urology measure.

Description of Change:

Risk Adjustment Table 1

Add: “Number of qualifying procedures” in patient-level variable column and “Defined as 2 vs 1, 3, or more vs. 1” in the Risk-adjusted variables column.

Add: “Surgical Procedural Complexity” in the patient-level variable column and “Work RVU” in the Risk-adjusted variables column.

Impacts: ASC-19

Rationale: New ASC-19 General Surgery measure information form added for Calendar Year 2024 payment determination and subsequent years.

Description of Change:

Add: ASC-19 Measure Information Form.

Impacts: ASC-9, ASC-11, ASC-13, and ASC-14

Rationale: Update the Web-based measure submission language to current Hospital Quality Reporting (HQR) submission platform.

Description of Change:

Annual data submission period:

Change from: See the timeline posted to QualityNet.org for this measure; select Ambulatory Surgical Centers and then Data Submission in the drop-down menu. Data entry will be achieved through the secure side of QualityNet.org via an online tool available to authorized users.

Change to: See the timeline posted to QualityNet.CMS.gov for this measure; select Ambulatory Surgical Centers then Data Submission from the banner options, then click the Deadlines tile from the left side of the page. Data will be completed through the Hospital Quality Reporting (HQR) Secure Portal at <https://hqr.cms.gov> via an online tool available to authorized users.

Ambulatory Surgical Center Quality Reporting Specifications Manual

Release Notes Version 11.0a

Release Notes Completed: December 1, 2021

Guidelines for Using Release Notes

These Release Notes provide modifications to the Ambulatory Surgical Center Quality Reporting (ASCQR) Program Specifications Manual. They are provided as a reference tool and are not intended to be used as program abstraction tools. Please refer to the ASCQR Program Specifications Manual for the complete and current technical specifications and abstraction information.

The notes are organized to follow the order of the Table of Contents. Within each topic section, a row represents a change that begins with general changes and is followed by data elements in alphabetical order. The **implementation date is 01/01/2022**, unless otherwise specified. The row headings are described below:

- **Impacts** – Used to identify which portion(s) of the Manual Section is impacted by the change listed. Examples are Measure Information Forms, Quality Data Coding and Sampling Specifications, and Appendix A.
- **Rationale** – Provided for the change being made.
- **Description of Changes** – Used to identify the section within the document where the change occurs. Examples are Definitions, Numerator, and Denominator.

The notes in the tables below are organized to follow the Table of Contents in the Specifications Manual.

Measure Information Forms

Impacts: ASC-20: COVID-19 Vaccination Coverage Among Health Care Personnel (HCP COVID-19 Vaccination)

Rationale: Measure finalized for addition in the CY 2022 Hospital Outpatient Prospective Payment System (OPPS) and Ambulatory Surgical Center (ASC) Payment System (OPPS/ASC) Final Rule beginning with Calendar Year 2024 payment determination year. ASCs will be required to report data quarterly on the measure for the January 2022 through December 2022 reporting period and subsequent years.

Description of Change:

ADD the Measure Information Form for ASC-20 to the ASC Quality Reporting Specifications Manual v11.0a.

Ambulatory Surgical Center Quality Reporting Specifications Manual

Version 11.0a

Encounter Dates: 01-01-22 (1Q22) through 12-31-22 (4Q22)

OMB #0938-1270 Expiration Date: 12-31-2022

Table of Contents

Acknowledgement	ii
Program Background and Requirements	iii
Section 1: Measure Information Form Introduction	1-1
Measure Information Forms	
ASC-9: Endoscopy/Polyp Surveillance: Appropriate Follow-up Interval for Normal Colonoscopy in Average Risk Patients	1-2
ASC-11: Cataracts – Improvement in Patient’s Visual Function within 90 Days Following Cataract Surgery	1-4
ASC-12: Facility 7-Day Risk-Standardized Hospital Visit Rate after Outpatient Colonoscopy Introduction.....	1-6
ASC-13: Normothermia Outcome	1-11
ASC-14: Unplanned Anterior Vitrectomy	1-14
ASC-17: Hospital Visits After Orthopedic Ambulatory Surgical Center Procedures Introduction	1-16
ASC-18: Hospital Visits After Urology Ambulatory Surgical Center Procedures Introduction	1-21
ASC-19: Facility-Level 7-Day Hospital Visits after General Surgery Procedures Performed at Ambulatory Surgical Centers Introduction	1-25
ASC-20: COVID-19 Vaccination Coverage Among Health Care Personnel	1-30
Section 2: Sampling Specifications	2-1
Section 3: Quality Data Transmission	3-1
Appendix A: Tools and Resources	A-1
Appendix B: Preview Section	B-1

Acknowledgement

The *Ambulatory Surgical Center Quality Reporting Specifications Manual* was developed by the Centers for Medicare & Medicaid Services (CMS) to provide a uniform set of quality measures for the ambulatory surgical center (ASC) setting. The primary purpose of these measures is to promote high quality care for patients receiving services in ASC settings.

No royalty or user fee is required for copying or reprinting this manual, but there are conditions required for use: 1) The copier or printer must disclose that the *Ambulatory Surgical Center Quality Reporting Specifications Manual* is periodically updated and the copied or reprinted version may not be current, unless the copier or printer has verified and affirmed the version is current. 2) The copier or printer must disclose that users participating in the Ambulatory Surgical Center Quality Reporting (ASCQR) Program are required to update their software and associated documentation based on the published *Ambulatory Surgical Center Quality Reporting Specifications Manual* production quality timelines.

Example Acknowledgement: The *Ambulatory Surgical Center Quality Reporting Specifications Manual* [Version xx, Month, Year] is periodically updated by the Centers for Medicare & Medicaid Services. Users of the *Ambulatory Surgical Center Quality Reporting Specifications Manual* must update their software and associated documentation based on the published manual production timelines.

CPT® only copyright 2021 American Medical Association. All rights reserved.

CPT® is a registered trademark of the American Medical Association.

Applicable FARS\DFARS Restrictions Apply to Government Use.

Fee Schedules, relative value units, conversion factors and/or related components are not assigned by the American Medical Association (AMA), are not part of CPT®, and the AMA is not recommending their use. The AMA does not directly or indirectly practice medicine or dispense medical services. The AMA assumes no liability for data contained or not contained herein.

The International Classification of Diseases, 11th Revision, Clinical Modification (ICD-10-CM) is published by the United States Government. A CD-ROM, which may be purchased through the Government Printing Office, is the only official Federal government version of the ICD-10-CM. ICD-10-CM is an official Health Insurance Portability and Accountability Act standard.

IMPORTANT SUBMISSION ALERT!!

To submit Ambulatory Surgical Center Quality Reporting (ASCQR) Program measures to CMS, files must meet the specifications found only in this CMS manual. Otherwise, the files will be rejected for not meeting CMS quality data submission requirements and may not receive the full payment update.

Program Background and Requirements

CMS Quality Initiatives

Background

In November 2001, U.S. Department of Health & Human Services (HHS) Secretary Tommy G. Thompson announced The Quality Initiative, his commitment to assure quality healthcare for all Americans through published consumer information coupled with healthcare quality improvement support from Medicare's Quality Improvement Organizations (QIOs). The Quality Initiative was launched nationally in 2002 as the Nursing Home Quality Initiative (NHQI) and expanded in 2003 with the Home Health Quality Initiative (HHQI) and the Hospital Quality Initiative (HQI). These initiatives are part of a comprehensive look at the quality of care provided in hospitals, nursing homes, home health agencies, and physician offices. These efforts grew under subsequent Secretaries through support and expansion of activities that strengthen healthcare transparency and value-driven healthcare.

The Medicare Improvements and Extension Act under Division B of Title I of the Tax Relief and Health Care Act (MIEA-TRHCA) of 2006 (Pub. L. 109-432), enacted on December 20, 2006, made changes in the Outpatient Prospective Payment Systems (OPPS). In the Calendar Year (CY) 2008 OPPS/ Ambulatory Surgical Center (ASC) Final Rule, the Centers for Medicare & Medicaid Services (CMS) became statutorily required to have a program under which ASCs will report data on the quality of their care using standardized measures to receive the full annual update (APU) to the ASC payment rate. The program established under the CY 2012 OPPS/ASC Final Rule with Comment Period (CMS-1525-FC) and supported by this manual is the Ambulatory Surgical Center Quality Reporting Program (ASCQR Program). The measures described in this manual will expand as additional priority areas for quality improvements in ASC settings are identified and will be designed to evaluate the diversity of services and clinical topics provided to adult patients in ASC settings.

Claims-based measures ASC-1 through ASC-4, adopted by CMS for the ASCQR Program, were originally developed by the ASC Quality Collaboration and are the intellectual property of the ASC Quality Collaboration. Additional information about the ASC quality measures endorsed by the National Quality Forum (NQF) is available in the ASC Quality Collaboration Implementation Guide (www.ascquality.org). Measures ASC-1 through ASC-4 have been retained in the ASCQR Program; however, data collection has been suspended beginning with the CY 2021 payment determination until further action in rulemaking, with the goal of updating the data submission method.

Objective

The ASCQR Program uses a variety of tools to stimulate and support a significant improvement in the quality of ASC care. This initiative aims to refine and standardize ASC data collection, data transmission, and performance measures in order to construct a robust, prioritized, and standard quality outpatient measure set for ASCs. The goal is for all private and public purchasers, oversight and accrediting entities, and payers and providers of ASC care to use these same measures in their national public reporting activities. Quality improvement support, collaborations, standardization, and assuring compliance with Medicare Conditions of Participation (CoPs) are important additional tools in achieving this objective.

Program Requirements

ASCs that do not meet program requirements, which include reporting of quality measure data for the ASCQR Program, may receive a two percent reduction in their ASC payment update. ASCQR Program requirements apply to all entities subject to the ASC Fee Schedule (ASCFS). The definition of an ASC can be found in the Claims Processing Manual, Chapter 14, Section 10.1, located at (www.cms.hhs.gov).

Data Collection and Submission

Data for claims-based measures included in this specifications manual are captured from Medicare Part B fee-for-service (FFS) claims submitted by the ASC during required reporting periods. Medicare Part B FFS patients include Medicare Railroad Retirement Board patients and Medicare Secondary payer patients. Medicare Advantage patients are not included for reporting purposes. For claims-based measures, the reporting period refers to the dates of service, not date of submission. For example, if a service was provided on December 30, 2020, with claim submission on January 1, 2021, this claim would be included in the CY 2022 payment determination.

Measures Submitted via a Web-Based Tool

Data for ASC-9, ASC-11 (a voluntary measure), ASC-13, and ASC-14 are to be submitted using a web-based tool located on the Hospital Quality Reporting (HQR) portal at <https://hqr.cms.gov/>.

Annual Data Submission Period: See the timeline posted to QualityNet.org for these measures.

Submission Instructions: Data entry will be achieved through the secure side of HQR via an online tool available to authorized users. After logging into the secure portal:

- Select **Data Submission** from the left side screen Lock Menu.
- Select **Data Form**.
- Select **Launch Data Form** to open the submission application.
- Select **Start Measures** to enter data.
- Enter data for a measure and then select the **Save and Return** icon. Repeat this process for each required measure until all required data is complete.
- Facilities that do not have data for a required measure should select the checkbox marked **Please enter zeros for this measure, as I have no data to submit**.
- Select **I'm ready to submit** dial at the bottom of the page. The **All Measures Successfully Submitted** screen will display, and the data submission process is complete.
 - The dial will remain grayed out until all required measures are completed. The dial will turn blue when all required measures are completed.
 - Data are not recognized as officially submitted until the **I'm ready to submit** icon is selected and the **All Measures Successfully Submitted** screen displays.

The **File Upload** option is a new feature and requires the approved CSV template to be used. File upload may be used by vendors or corporations submitting data for more than one ASC at the same time.

Please refer to www.QualityNet.org for data submission deadlines.

Fewer Than 240 Rule

CMS determined that some ASCs have relatively small numbers of Medicare claims and instituted a claims threshold for ASCs with fewer than 240 Medicare claims (primary plus secondary payer) per year. For example, an ASC with fewer than 240 Medicare claims in CY 2019 (for the CY 2021 payment determination year) would not be required to participate in the ASCQR Program in CY 2020 (for the CY 2022 payment determination year).

Public Reporting

The HHS Secretary must establish procedures to make data collected under the ASCQR Program publicly available and to supply facilities the opportunity to review their data prior to publication. Details on the ability to withdraw and not have data publicly reported (i.e., the Extraordinary Circumstance Exception request process) and the reconsideration request process were finalized in the FY 2013 Inpatient Prospective Payment System (IPPS)/Long-Term Care Hospital Prospective Payment System (LTCH PPS) Final Rule.

Related National Activities

National Quality Forum (NQF)

The NQF has approved a set of national voluntary consensus standards for measuring the quality of hospital care. These measures will permit consumers, providers, purchasers, and quality improvement professionals to evaluate and compare the quality of care in a variety of healthcare settings across the nation by using a standard set of measures. Measures that are endorsed by NQF are denoted as such on the Measure Information Forms.

Measures Management System

The Measures Management System (MMS) is a set of processes and decision criteria used by CMS to oversee the development, implementation, and maintenance of healthcare quality measures. CMS recognizes the need for quality measures of the highest caliber, maintained throughout their life cycle to ensure they retain the highest level of scientific soundness, importance, feasibility, and usability. Through the use of a standardized process with broadly recognized criteria, the MMS ensures that CMS will have a coherent, transparent system for measuring the quality of care delivered to its beneficiaries.

Paperwork Reduction Act (PRA)

PRA Disclosure

According to the Paperwork Reduction Act of 1995, no persons are required to respond to a collection of information unless it displays a valid Office of Management and Budget (OMB) control number. The valid OMB control number for this information collection is **0938-1270**. The time required to complete this information collection is estimated to average 15 minutes per response, including the time to review instructions, search existing data resources, gather the data needed, and complete and review the information collection. If you have comments concerning the accuracy of the time estimate(s) or suggestions for improving this form, please write to CMS, 7500 Security Boulevard, Attn: PRA Reports Clearance Officer, Mail Stop C4-26-05, Baltimore, MD 21244-1650.

Expiration Date: 12-31-2022

Measure Information Form Introduction

Measure Information Form (MIF) Format

Measure Title – The specific national ASC quality measure.

Measure ID # – A unique alphanumeric identifier assigned to the measure. Information associated with a measure is identified by this alphanumeric number (i.e., ASC-9, ASC-13, ASC-14, etc.).

Quality Reporting Option – Indicates what is being evaluated by the measure.

- **Outcome:** A measure that indicates the result of performance (or non-performance) of a function(s) or process(es).
- **Process:** A measure used to assess a goal-directed, interrelated series of actions, events, mechanisms, or steps, such as a measure of performance that describes what is done to, for, or by patients, as in performance of a procedure.
- **Measures Submitted via a Web-based Tool** - A measure used to assess a goal-directed, interrelated series of actions, events, mechanisms, or steps with data entry achieved through the secure side of QualityNet.org via an online tool available to authorized users.

Description – A brief explanation of the measure’s focus, such as the activity or the area on which the measure centers attention (e.g., This measure is used to assess the percentage of cataract surgery patients who have an unplanned anterior vitrectomy).

Denominator Statement – Represents the population evaluated by the performance measure.

- **Included Population in Denominator:** Specific information describing the population(s) comprising the denominator, not contained in the denominator statement, or not applicable.
- **Excluded Population in Denominator:** Specific information describing the population(s) that should not be included in the denominator, or none.

Numerator Statement – Represents the portion of the denominator that satisfies the conditions of the performance measure.

- **Included Population in Numerator:** Specific information describing the population(s) comprising the numerator, not contained in the numerator statement, or not applicable.
- **Excluded Population in Numerator:** Specific information describing the population(s) that should not be included in the numerator, or none.

Data Sources – The documents that typically contain the information needed to determine the numerator and denominator.

Definitions – Specific definitions for the terms included in the numerator and denominator statements.

Selection Basis – The reason for performing a specified process to improve the quality of care outcome. This may include specific literature references, evidence-based information, expert consensus, etc.

Clinical Recommendation Statements – Supporting literature statements for the specified quality of care measure.

Selected References – Specific literature references that are used to support the importance of the performance measure.

Measure Information Form

Measure Title: Endoscopy/Polyp Surveillance: Appropriate Follow-up Interval for Normal Colonoscopy in Average Risk Patients

Measure ID #: ASC-9

Quality Reporting Option: Measures submitted via a web-based tool

Description: Percentage of patients aged 50 to 75 years of age receiving a screening colonoscopy without biopsy or polypectomy who had a recommended follow-up interval of at least 10 years for repeat colonoscopy documented in their colonoscopy report.

Numerator Statement: Patients who had a recommended follow-up interval of at least 10 years for repeat colonoscopy documented in their colonoscopy report.

Denominator Statement: All patients aged 50 to 75 years of age receiving screening colonoscopy without biopsy or polypectomy.

Denominator Criteria (Eligible Cases):

Patients aged ≥ 50 and ≤ 75 on date of encounter

and

ICD-10-CM Diagnosis code: Z12.11

and

CPT or HCPCS: 44388, 45378, G0121

without

CPT Category I Modifiers: 52, 53, 73, 74

without

ICD-10-CM Diagnosis codes: Z83.71, Z86.010, Z80.0, Z85.038

Denominator Exclusion:

Documentation of medical reason(s) for not recommending at least a 10-year follow-up interval (e.g., inadequate prep, familial or personal history of colonic polyps, patient had no adenoma and age is ≥ 66 years old, or life expectancy < 10 years, other medical reasons). Medical reason(s) are at the discretion of the physician. Documentation indicating no follow-up colonoscopy is needed or recommended is only acceptable if the patient's age is documented as ≥ 66 years old, or life expectancy < 10 years. Documentation of a medical condition or finding can be used as a medical reason(s) for denominator exclusion purposes only if the documented recommended follow-up interval is less than 10 years.

Examples:

- Diverticulitis documented in the medical record and a follow-up interval of 5 years in the colonoscopy report.
- Family history of colon cancer and a follow-up interval of 3 years documented in the colonoscopy report.
- Less than adequate prep documented in the medical record with a repeat colonoscopy in 3 years in the colonoscopy report.

Annual Data Submission Period: See the timeline posted to QualityNet.CMS.gov for this measure. Select Ambulatory Surgical Centers, then select Data Submission from the banner options. Click the Deadlines tile from the left side of the page. Data will be completed through the Hospital Quality Reporting (HQR) Secure Portal at <https://hqr.cms.gov> via an online tool available to authorized users.

Additional Instructions: Patients will be counted in the numerator if there is reference in the final colonoscopy report that the appropriate follow-up interval for the repeat colonoscopy is at least 10 years from the date of the current colonoscopy (i.e., the colonoscopy performed during the measurement period). A range that includes “10 years” (e.g., 7 to 10 years) is not acceptable.

Measure Information Form

Measure Title: Cataracts – Improvement in Patient’s Visual Function within 90 Days Following Cataract Surgery

Measure ID #: ASC-11*

Quality Reporting Option: Measure submitted via a web-based tool

Description: Percentage of patients aged 18 years and older who had cataract surgery and had improvement in visual function achieved within 90 days following the cataract surgery, based on completing a pre-operative and post-operative visual function survey.

Numerator Statement: Patients 18 years and older who had improvement in visual function achieved within 90 days following cataract surgery, based on completing **both** a pre-operative and post-operative visual function instrument.

Denominator Statement: All patients aged 18 years and older who had cataract surgery and completed **both** a pre-operative and post-operative visual function survey.

Denominator Criteria (Eligible Cases):

Patients aged ≥ 18 years

and

CPT (without modifiers 55 or 56): 66840, 66850, 66852, 66920, 66930, 66940, 66982, 66983, 66984, 66987, 66988

Excluded Population: Patients who did not complete both a pre-operative and post-operative survey.

Annual Data Submission Period: See the timeline posted to QualityNet.CMS.gov for this measure. Select Ambulatory Surgical Centers then Data Submission from the banner options. Click the Deadlines tile from the left side of the page. Data will be completed through the Hospital Quality Reporting (HQR) Secure Portal at <https://hqr.cms.gov> via an online tool available to authorized users.

Data Collection Approach: Include procedures performed from the beginning of the reporting year through 90 days prior to the end of the reporting period. This will allow the post-operative period to occur.

Additional Instructions: Definition for Survey: An appropriate data collection instrument is an assessment tool that has been validated for the population for which it is being used; this measure utilizes a visual function survey. While it is recommended that the facility obtain the survey results from the appropriate physician or optometrist, the surveys can be administered by the facility via phone, mail, email, or during clinician follow-up. For this measure, the same data collection instrument (i.e., survey) must be used pre-operatively and post-operatively.

Examples of tools for visual function assessment include, but are not limited to, National Eye Institute Visual Function Questionnaire (NEI-VFQ) (http://www.rand.org/health/surveys_tools/vfq.html), the Visual Function (VF)-14, the modified VF-8, the Activities of Daily Vision Scale (ADVS), the Catquest, and the modified Catquest-9. For each of the VF tools (VF-14 or VF-8R), all questions have equal weight; only non-missing questions are included, and the total weight is 100.

Definition of Performance Met: Improvement in visual function achieved within 90 days following cataract surgery (G0913).

Definition of Performance Not Met: Improvement in visual function not achieved within 90 days following cataract surgery (G0915).

Denominator Exception: Patient care survey was not completed by patient (G0914).

*Finalized in the CY 2015 OPPI/ASC Final Rule, ASCs have the option to voluntarily collect and submit data for ASC-11 for the CY 2017 payment determination and subsequent years. All data submitted voluntarily will be publicly reported as discussed in the CY 2014 OPPI/ASC Proposed Rule (Vol. 78, No. 139 Proposed Rule, pp. 43664, 43669).

Centers for Medicare & Medicaid Services (CMS)

Facility 7-Day Risk-Standardized Hospital Visit Rate after Outpatient Colonoscopy

Introduction

This section of the manual includes the Measure Information Form (MIF) for the CMS Facility 7-Day Risk-Standardized Hospital Visit Rate after Outpatient Colonoscopy measure. This is an administrative claims-based measure, so there is no data abstraction responsibility on the part of the facility. The measure includes outpatient colonoscopies performed among Medicare Fee-for-Service (FFS) beneficiaries aged ≥ 65 years.

CMS will use the measure results in the Ambulatory Surgical Center Quality Reporting (ASCQR) Program for payment determination in calendar year 2024. Beginning with payment determination year 2020, CMS began calculating the measure with three years of claims data. For payment determination year 2024, the performance period is July 2020 through December 2022. The performance period has been shortened to exclude data for services occurring from January – June 2020 in accordance with the [CMS COVID-19 Data Waiver](#).

This measure was developed by a team of clinical and statistical experts from the Yale New Haven Health Services Corporation/Center for Outcomes Research and Evaluation (YNHHSC/CORE), under contract to CMS. The measure is currently endorsed by the National Quality Forum (NQF #2539).

The aim of the MIF is to provide transparency of the measure methodology to the facility and vendor communities. Additional background information about the measure methodology can be found in the Measure Updates and Specifications Report available on the Measure Methodology *QualityNet* page (<https://qualitynet.cms.gov/asc/measures/colonoscopy/methodology>). CMS provides a new report each year to align with the most current calendar year. For example, the 2018 Measure Updates and Specifications Report aligned with a performance period ending in calendar year 2018. If the reevaluation report associated with the performance period of this MIF is not yet available, it is sufficient to use the most recent report. Please submit questions about the measure to the *QualityNet* Question and Answer Tool: https://cmsqualitysupport.servicenowservices.com/qnet_qa

CMS calculates a facility-level, risk-standardized unplanned hospital visit rate for all eligible facilities. Facilities and their ORYX[®] Vendors do not have sufficient data to produce facilities' risk-standardized results. CMS inpatient and outpatient claims data are used to determine whether a beneficiary has had an unplanned hospital visit to any acute care hospital within 7 days of the outpatient colonoscopy. In addition, CMS extracts and utilizes physician office, inpatient, and outpatient claims data from the year prior to the colonoscopy, as well as claims data from the colonoscopy, to risk adjust the facility-level outcome rates.

Measure Information Form

Performance Measure Name: Facility 7-Day Risk-Standardized Hospital Visit Rate after Outpatient Colonoscopy

Measure ID #: ASC-12

Measure Set: CMS Outcome Measures (Claims-Based)

Description: The Facility 7-Day Risk-Standardized Hospital Visit Rate after Outpatient Colonoscopy Measure, hereafter referred to as the colonoscopy measure, estimates a facility-level rate of risk-standardized, all-cause, unplanned hospital visits within 7 days of an outpatient colonoscopy among Medicare Fee-for-Service (FFS) patients aged 65 years and older.

Rationale: The colonoscopy measure will reduce adverse patient outcomes associated with preparation for colonoscopy, the procedure itself, and follow-up care by capturing and making more visible to providers and patients all unplanned hospital visits following the procedure. The measure score will assess quality and inform quality improvement.

Type of Measure: Outcome

Improvement Noted As: A decrease in the facility-level risk-standardized unplanned hospital visit rate. Lower rate indicates better quality.

Numerator Statement:

The colonoscopy measure does not have a traditional numerator and denominator like a core process measure (e.g., percentage of adult patients with diabetes aged 18–75 years receiving one or more hemoglobin A1c tests per year); thus, we are using this field to define the outcome. The calculation of the rate is defined under the Measure Calculation below.

The outcome for this measure is all-cause, unplanned hospital visits within 7 days of an outpatient colonoscopy. The measure defines a hospital visit as any emergency department (ED) visit, observation stay, or unplanned inpatient admission.

Denominator Statement:

The target population for this measure includes low-risk colonoscopies performed in the outpatient setting for Medicare FFS patients aged 65 years and older. For implementation in the Ambulatory Surgical Center Quality Reporting (ASCQR) Program, the measure will be calculated among Ambulatory Surgical Centers (ASCs).

Included Populations:

Outpatient colonoscopies for Medicare FFS patients aged 65 years and older. Medicare FFS beneficiaries with an outpatient colonoscopy are included if the patient has been enrolled in Part A and Part B Medicare for up to 12 months prior to the date of procedure to ensure the availability of administrative data for risk adjustment.

The measure is focused on low-risk colonoscopies. Cohort codes are located in the data dictionary that accompanies the Measure Updates and Specifications Report, available on the Measure Methodology *QualityNet* page: <https://qualitynet.cms.gov/asc/measures/colonoscopy/methodology> (In prior years, all measure codes are located within the Measure Updates and Specifications Reports.)

The measure does not include colonoscopy Current Procedural Terminology (CPT®) procedure codes that reflect fundamentally higher-risk or different procedures. Qualifying colonoscopies billed with a concurrent high-risk colonoscopy procedure code are not included in the measure; the data dictionary that accompanies the most recent Measure Updates and Specifications Report at the link above contains the complete listing of all high-risk procedure codes.

Cohort Exclusions (excluded colonoscopies):

See the Measure Updates and Specifications Report available on the Measure Methodology *QualityNet* page for detailed measure cohort exclusion criteria (<https://qualitynet.cms.gov/asc/measures/colonoscopy/methodology>). The accompanying data dictionary contains the most current exclusion codes.

Admissions not counted in the outcome (“Planned admissions”):

Admissions identified as planned by the planned admission algorithm are not counted in the outcome. The “algorithm” is a set of criteria for classifying admissions as planned using Medicare claims. The algorithm identifies admissions that are typically planned and may occur within 7 days of an outpatient colonoscopy. CMS based the planned admission algorithm on three principles:

1. A few specific, limited types of care are always considered planned (transplant surgery, maintenance chemotherapy, rehabilitation);
2. Otherwise, a planned admission is defined as a non-acute admission for a scheduled procedure; and
3. Admissions for acute illness or for complications of care are never planned.

The planned admission algorithm uses a flowchart and four tables of procedures and conditions to operationalize these principles and to classify inpatient admissions as planned. ED visits and observation stays are never considered planned. The flowchart and tables are available in the Measure Updates and Specifications Report available on the Measure Methodology *QualityNet* page:

<https://qualitynet.cms.gov/asc/measures/colonoscopy/methodology>.

Risk Adjustment:

The measure’s approach to risk adjustment is tailored to, and appropriate for, a publicly reported outcome measure, as articulated in published scientific guidelines (Krumholz et al., 2006; Normand et al., 2007).

The measure uses a two-level hierarchical logistic regression model to estimate facility-level risk-standardized hospital visit rates. This approach accounts for the clustering of patients within facilities and variation in sample size across facilities.

The risk-adjustment model includes 15 patient-level variables (age, concomitant upper GI endoscopy, polypectomy during the procedure, and 12 comorbidity variables). The measure defines comorbidity variables using condition categories (CCs), which are clinically meaningful groupings of the many thousands of International Classification of Diseases, Tenth Revision, Clinical Modification (ICD-10-CM) diagnosis codes. Certain CCs are considered possible complications of care; therefore, the measure does not risk-adjust for them if they occur only at the time of the procedure. This is because only comorbidities that convey information about the patient at the time of the procedure or in the 12 months prior, and not complications that arose during the colonoscopy procedure, are included in the risk adjustment. The Measure Updates and Specifications Report data dictionary contains complete definitions of risk factors and CCs that are considered possible complications of care and are not risk adjusted for if they occur only at the time of the procedure.

Table 1: Patient-Level Risk-Adjustment Variables

Patient-Level Variables	Risk-Adjusted Variables
Demographics	Age (categorized; 65–69; 70–74; 75–79; 80–84; 85+)
Procedural Factors	Concomitant Endoscopy Polypectomy during Procedure
Comorbidities	Congestive Heart Failure Ischemic Heart Disease Stroke/Transient Ischemic Attack (TIA) Chronic Lung Disease Metastatic Cancer Liver Disease Iron Deficiency Anemia Disorders of Fluid, Electrolyte, Acid Base Pneumonia Psychiatric Disorders Drug and Alcohol Abuse/Dependence Arrhythmia Age Categorized x Arrhythmia Interaction

Note: The relationship between age and risk of a hospital visit within 7 days was modified by the presence or absence of a cardiac arrhythmia (p-value for interaction < 0.001). Therefore, we included an interaction term (age categorized x arrhythmia) in the final model.

Full details of the development of the risk-adjustment model for this measure are available at <https://www.cms.gov/Medicare/Quality-Initiatives-Patient-Assessment-Instruments/HospitalQualityInits/Measure-Methodology>.

Data Collection Approach: Medicare administrative claims and enrollment data.

Data Accuracy:

The administrative claims data used to calculate the measure are maintained by CMS' Office of Information Services. These data undergo additional quality assurance checks during measure development and maintenance.

Measure Analysis Suggestions: None

Sampling: No

Data Reported As:

Facility-level 7-day risk-standardized unplanned hospital visit rate following outpatient colonoscopy.

Measure Calculation:

The measure estimates facility-level 7-day risk-standardized unplanned hospital visit rates using hierarchical logistic regression modeling (a form of hierarchical generalized linear modeling [HGLM]). In brief, the approach simultaneously models two levels (patient and facility) to account for the variance in patient outcomes within and between facilities. At the patient level, the model adjusts the log-odds of a hospital visit within 7 days of the procedure for age, procedural factors, and selected clinical covariates. At the facility level, it estimates the facility-specific intercepts as arising from a normal distribution. The facility-specific intercept represents the underlying risk of a hospital visit within 7 days after a colonoscopy at that facility,

while accounting for patient risk. The facility-specific intercepts also account for the clustering (non-independence) of patients within the same facility. If there were no differences among facilities, the facility-specific intercepts would be identical across all facilities after adjusting for patient risk. The statistical modeling approach is described fully in the original technical report: <https://www.cms.gov/Medicare/Quality-Initiatives-Patient-Assessment-Instruments/HospitalQualityInits/Measure-Methodology>

Selected References:

Krumholz HM, Brindis RG, Brush JE, et al. Standards for Statistical Models Used for Public Reporting of Health Outcomes: An American Heart Association Scientific Statement From the Quality of Care and Outcomes Research Interdisciplinary Writing Group: Cosponsored by the Council on Epidemiology and Prevention and the Stroke Council Endorsed by the American College of Cardiology Foundation. *Circulation*. 2006; 113 (3): 456-462.

Normand S-LT, Shahian DM. Statistical and Clinical Aspects of Hospital Outcomes Profiling. *Stat Sci*. 2007; 22 (2): 206-226.

Measure Information Form

Measure Title: Normothermia Outcome

Measure ID #: ASC-13

Quality Reporting Option: Measure submitted via a web-based tool

Description: This measure is used to assess the percentage of patients having surgical procedures under general or neuraxial anesthesia of 60 minutes or more in duration **who** are normothermic within 15 minutes of arrival in PACU.

Numerator: Surgery patients with a body temperature equal to or greater than 96.8 Fahrenheit/36 Celsius recorded within fifteen minutes of arrival in PACU.

Denominator: All patients, regardless of age, undergoing surgical procedures under general or neuraxial anesthesia of greater than or equal to 60 minutes duration.

Numerator Exclusions: None

Denominator Exclusions: Patients who did not have general or neuraxial anesthesia; patients whose length of anesthesia was less than 60 minutes; patients with physician/advance practice nurse/physician's assistant documentation of intentional hypothermia for the procedure performed.

Data Sources: ASC medical records, as well as anesthesia administration and nursing records, may serve as data sources. Clinical logs designed to capture information relevant to normothermia are also potential sources.

Data Element Definitions:

Anesthesia duration: The difference, in minutes, between the time associated with the start of anesthesia for the principal procedure and the time associated with the end of anesthesia for the principal procedure.

Arrival in PACU: Time of patient arrival in PACU (post-anesthesia care unit)*.

General anesthesia: Drug-induced loss of consciousness during which the patient is not arousable, even by painful stimulation.

Intentional hypothermia: A deliberate, documented effort to lower the patient's body temperature in the perioperative period.

Neuraxial anesthesia: Epidural or spinal anesthesia.

Temperature: A measure in either Fahrenheit or Celsius of the warmth of a patient's body. Axillary, bladder, core, esophageal, oral, rectal, skin surface, temporal artery, or tympanic temperature measurements may be used.

Rationale: Impairment of thermoregulatory control due to anesthesia may result in perioperative hypothermia. Hypothermia, even when mild, is associated with consequences such as increased susceptibility to infection, impaired coagulation, cardiovascular stress, and cardiac complications, as well as post-anesthetic shivering and thermal discomfort. Several methods to maintain normothermia are available.

There is no literature available on variation in rates of normothermia among ASC providers. However, variability in maintaining normothermia has been demonstrated in other settings.

* Definition of Arrival in PACU is consistent with the definition in the Procedural Times Glossary of the American Association of Clinical Directors as approved by the ASA, ACS and AORN.

Clinical Practice Guidelines: This performance measure is aligned with current guidelines regarding temperature management in patients undergoing general or neuraxial anesthesia lasting 60 minutes or more.

Measure ascertains response to the following question: What is the percentage of patients having surgical procedures under general or neuraxial anesthesia of 60 minutes or more in duration who are normothermic within 15 minutes of arrival in PACU?

Annual data submission period: See the timeline posted to [QualityNet.CMS.gov](https://qualitynet.cms.gov) for this measure; select Ambulatory Surgical Centers then Data Submission from the banner options, then click the Deadlines tile from the left side of the page. Data will be completed through the Hospital Quality Reporting (HQR) Secure Portal at <https://hqr.cms.gov> via an online tool available to authorized users.

References

American Society of PeriAnesthesia Nurses (ASPAN). ASPAN's evidence-based clinical practice guideline for the promotion of perioperative normothermia: second edition. J Perianesth Nurs. 2010;25(6):346–65.

Anderson DJ et al. Strategies to prevent surgical site infections in acute care hospitals: 2014 update. Infect Control Hosp Epidemiol. 2014;35 Suppl 2: S66–88.

Balki I et al. Effect of perioperative active body surface warming systems on analgesic and clinical outcomes: a systematic review and meta-analysis of randomized controlled trials. Anesth Analg. 2020 Nov;131(5):1430-1443.

Berrios-Torres SI et al. Centers for Disease Control and Prevention Guideline for the Prevention of Surgical Site Infection, 2017. JAMA Surg. 2017 Aug 1;152(8):784–791.

Fleisher LA, Beckman JA, Brown KA, Calkins H, Chaikof E, Fleischmann KE, Freeman WK, Froehlich JB, Kasper EK, Kersten JR, Riegel B, Robb JF. ACC/AHA 2007 guidelines on perioperative cardiovascular evaluation and care for noncardiac surgery: a report of the American College of Cardiology/American Heart Association Task Force on Practice Guidelines (Writing Committee to Revise the 2002 Guidelines on Perioperative Cardiovascular Evaluation for Noncardiac Surgery). J Am Coll Cardiol 2007;50: e159–241.

Frank SM, Fleisher LA, Breslow MJ, et al. Perioperative maintenance of normothermia reduces the incidence of morbid cardiac events. A randomized clinical trial. JAMA. 1997;277(14): 1127–1134.

Frank SM, Beattie C, Christopherson R, et al. Unintentional hypothermia is associated with postoperative myocardial ischemia. The Perioperative Ischemia Randomized Anesthesia Trial Study Group. Anesthesiology. 1993;78(3):468–476.

Kurz A. Physiology of thermoregulation. Best Pract Res Clin Anaesthesiol. 2008;22(4):627–644.

Kurz A, Sessler DI, Lenhardt R. Perioperative normothermia to reduce the incidence of surgical-wound infection and shorten hospitalization. Study of Wound Infection and Temperature Group. N Engl J Med. 1996;334(19):1209- The quality measures presented in this guide are the intellectual property of the ASC Quality Collaboration. 14 1215.

Kurz A, Sessler DI, Schroeder M, Kurz M. Thermoregulatory response thresholds during spinal anesthesia. Anesth Analg. 1993;77(4):721-726.

Lista F, Doherty CD, Backstein RM, Ahmad J. The impact of perioperative warming in an outpatient aesthetic surgery setting. Aesthet Surg J. 2012 Jul;32(5):613–20.

Matsukawa T, Sessler DI, Sessler AM, et al. Heat flow and distribution during induction of general anesthesia. Anesthesiology. 1995;82(3):662–673.

Morris RH. Operating room temperature and the anesthetized, paralyzed patient. Arch Surg. 1971; 102(2):95–97.

Ozaki M, Kurz A, Sessler DI, et al. Thermoregulatory thresholds during epidural and spinal anesthesia. Anesthesiology. 1994;81(2):282–288.

Rajagopalan S, Mascha E, Na J, Sessler DI. The effects of mild perioperative hypothermia on blood loss and transfusion requirement. Anesthesiology. 2008;108(1):71–77.

Schmied H, Kurz A, Sessler DI, Kozek S, Reiter A. Mild hypothermia increases blood loss and transfusion requirements during total hip arthroplasty. Lancet. 1996;347(8997):289–292.

Scott EM, Buckland R. A systematic review of intraoperative warming to prevent postoperative complications. AORN J. 2006;83(5):1090–1104, 1107–1113.

Measure Information Form

Measure Title: Unplanned Anterior Vitrectomy

Measure ID #: ASC-14

Quality Reporting Option: Measure submitted via a web-based tool

Description: This measure is used to assess the percentage of cataract surgery patients who have an unplanned anterior vitrectomy.

Numerator: All cataract surgery patients who had an unplanned anterior vitrectomy.

Denominator: All cataract surgery patients.

Numerator Exclusions: None

Denominator Exclusions: None

Data Sources: ASC medical records, incident/occurrence reports and variance reports are potential data sources.

Definitions:

Cataract surgery: For purposes of this measure, CPT code 66982 (Cataract surgery, complex), CPT code 66983 (Cataract surgery w/IOL, 1 stage) and CPT code 66984 (Cataract surgery w/IOL, 1 stage).

Unplanned anterior vitrectomy: An anterior vitrectomy that was not scheduled at the time of the patient's admission to the ASC.

Rationale: The need for unplanned anterior vitrectomy is an unanticipated event that can decrease the probability of good post-operative visual acuity, and generally result in worse long-term outcome after cataract surgery. Because cataract surgery is the most common surgery performed in ASCs, with millions being performed every year, even low unplanned anterior vitrectomy rates translate to relatively high total numbers of affected patients. ASCs can help keep rates low by tracking and comparing rates to established benchmarks, and facilitating mentoring as needed.

Clinical Practice Guidelines: No clinical practice guidelines addressing unplanned anterior vitrectomy in cataract surgery are available at this time. However, rates of unplanned anterior vitrectomy have been published in the clinical literature and can serve as comparative benchmarks of performance.

Measure ascertains response to the following question: What is the percentage of cataract surgery patients who have an unplanned anterior vitrectomy?

Annual data submission period: See the timeline posted to QualityNet.CMS.gov for this measure. Select Ambulatory Surgical Centers then Data Submission from the banner options. Click the Deadlines tile from the left side of the page. Data will be completed through the Hospital Quality Reporting (HQR) Secure Portal at <https://hqr.cms.gov> via an online tool available to authorized users.

References:

American Academy of Ophthalmology Cataract and Anterior Segment Panel. Preferred Practice Pattern® Guidelines. Cataract in the Adult Eye. San Francisco, CA: American Academy of Ophthalmology; 2011.

Chen M, Lamattina KC, Patrianakos T, Dwarakanathan S. Complication rate of posterior capsule rupture with vitreous loss during phacoemulsification at a Hawaiian cataract surgical center: a clinical audit. *Clin Ophthalmol*. 2014 Feb 5;8: 375–8.

Johansson B, Lundström M, Montan P, Stenevi U, Behndig A. Capsule complication during cataract surgery: Longterm outcomes: Swedish Capsule Rupture Study Group report 3. *J Cataract Refract Surg*. 2009 Oct;35(10):1694–8.

Lum F, Schein O, Schachat AP, et al. Initial two years of experience with the AAO National Eyecare Outcomes Network (NEON) cataract surgery database. *Ophthalmology* 2000; 107:691–7.

Powe NR, Schein OD, Gieser SC, et al, Cataract Patient Outcome Research Team. Synthesis of the literature on visual acuity and complications following cataract extraction with intraocular lens implantation. *Arch Ophthalmol* 1994; 112:239–52.

Schein OD, Steinberg EP, Javitt JC, et al. Variation in cataract surgery practice and clinical outcomes. *Ophthalmology* 1994; 101:1142–52.

Tan JH, Karwatowski WS. Phacoemulsification cataract surgery and unplanned anterior vitrectomy--is it bad news? *Eye (Lond)*. 2002 Mar;16(2):117–20.

Zaidi FH, Corbett MC, Burton BJ, Bloom PA. Raising the benchmark for the 21st century--the 1000 cataract operations audit and survey: outcomes, consultant-supervised training and sourcing NHS choice. *Br J Ophthalmol* 2007; 91: 731–6.

Centers for Medicare & Medicaid Services (CMS) Risk-Standardized Hospital Visits within 7 Days after Orthopedic Ambulatory Surgical Center (ASC) Procedures Measure

Introduction

This section of the manual includes the Measure Information Form (MIF) for the Risk-Standardized Hospital Visits within 7 days after Orthopedic Ambulatory Surgical Center (ASC) Procedures measure. Yale New Haven Health Services Corporation – Center for Outcomes Research and Evaluation (YNHHSC/CORE) developed the measure for the CMS under a contract supporting the development of ambulatory surgical center measures.

This is an administrative claims-based measure, so there is no data abstraction responsibility on the part of the facility. CMS calculates a facility-level, risk-standardized unplanned hospital visit rate for all eligible facilities. Facilities and their ORYX[®] vendors do not have sufficient data to produce facilities' risk-standardized results. CMS inpatient and outpatient claims data are used to determine whether a beneficiary has had an unplanned hospital visit to any acute care hospital within 7 days of the orthopedic surgery procedure. In addition, CMS extracts and utilizes physician office, inpatient, and outpatient claims data from the year prior to the surgery as well as claims data from the surgery to risk adjust the facility-level results.

CMS has finalized adoption of the measure into the Ambulatory Surgical Center Quality Reporting (ASCQR) Program for payment determination beginning in calendar year 2022.

The information in the following MIF is being provided in the interest of transparency and to promote understanding of the methodology on the part of the facility and vendor communities. Additional background information about the measure methodology can be found in the measure technical report

<https://www.cms.gov/Medicare/Quality-Initiatives-Patient-Assessment-Instruments/HospitalQualityInits/Measure-Methodology.html>).

Please submit questions about the measure to the *QualityNet* Question and Answer Tool: https://cmsqualitysupport.servicenow.com/qnet_qa.

Measure Information Form

Performance Measure Name: Hospital Visits after Orthopedic Ambulatory Surgical Center Procedures

Measure ID #: ASC-17

Measure Set: CMS Outcome Measures (Claims-Based)

Description: The measure estimates a facility-level rate of risk-standardized, all-cause, unplanned hospital visits within 7 days of an orthopedic surgery at an ASC among Medicare fee-for-service (FFS) patients aged 65 years and older.

Rationale: Nearly 70% of all surgeries in the US are performed in an outpatient setting, with an expanding number and variety of surgeries being performed at stand-alone ASCs (Cullen et al., 2009). This measure will serve to improve transparency, inform patients and providers, and foster quality improvement efforts for hospital visits following orthopedic surgery at ASCs.

Type of Measure: Outcome

Improvement Noted As: A decrease in the facility-level risk-standardized unplanned hospital visit rate.

Numerator Statement:

This outcome measure does not have a traditional numerator and denominator like a process measure (e.g., percentage of adult patients with diabetes aged 18–75 years receiving one or more hemoglobin A1c tests per year); thus, we are using this field to define the outcome. The calculation of the rate is defined below under Measure Calculation.

The outcome for this measure is all-cause, unplanned hospital visits within 7 days of orthopedic surgery at an ASC. The measure defines a hospital visit as any emergency department (ED) visit, observation stay, or unplanned inpatient admission.

Denominator Statement:

The target population for this measure is Medicare FFS patients aged 65 years and older undergoing outpatient orthopedic surgeries, typically performed by an orthopedist, at ASCs.

Included Populations:

The target population is Medicare FFS patients aged 65 years and older undergoing outpatient orthopedic surgeries at ASCs who have been enrolled in Part A and Part B Medicare for up to 12 months prior to the date of surgery to ensure the availability of data for identifying comorbidities for risk adjustment.

The measure includes procedures that are routinely performed at ASCs, involve increased risk of post-surgery hospital visits, and are routinely performed by orthopedists. For a list of procedure codes included in the measure cohort, see: <https://qualitynet.cms.gov > Ambulatory Surgical Centers > Measures > Orthopedic Measure > Methodology>.

Exclusion:

1. Surgeries for patients who survived at least 7 days but were not continuously enrolled in Medicare FFS Parts A and B in the 7 days after the surgery. The measure excludes these patients to ensure all patients have full data available for outcome assessment.

Admissions Not Counted in the Outcome (“Planned Admissions”):

Admissions identified as planned by the planned admission algorithm are not counted in the outcome. The “algorithm” is a set of criteria for classifying admissions as planned using Medicare claims. The algorithm identifies admissions that are typically planned and may occur within 7 days of an outpatient surgery. CMS based the planned admission algorithm on three principles:

1. A few specific, limited types of care are always considered planned (transplant surgery, maintenance chemotherapy, rehabilitation);
2. Otherwise, a planned admission is defined as a non-acute admission for a scheduled procedure; and
3. Admissions for acute illness or for complications of care are never planned.

The planned admission algorithm uses a flowchart and four tables of procedures and conditions to operationalize these principles and to classify inpatient admissions as planned. ED visits and observation stays are never considered planned. The flowchart and tables are available in the measure technical report, see <https://qualitynet.cms.gov> > Ambulatory Surgical Centers > Measures > Orthopedic Measure > Methodology.

Risk Adjustment:

The measure’s approach to risk adjustment is tailored to, and appropriate for, a publicly reported outcome measure as articulated in published scientific guidelines (Krumholz et al., 2006; Normand et al., 2007). The measure uses a two-level hierarchical logistic regression model to estimate facility-level risk-standardized hospital visit rates. This approach accounts for the clustering of patients within facilities and variation in sample size across facilities. The measure adjusts for differences across facilities in patient demographics, clinical factors, and surgery-related risk. Potential candidate risk factors were identified from related quality measures and the literature; a preliminary list of risk factors was developed and then revised based on TEP and expert clinical input.

The risk-adjustment model has 28 patient-level variables (age and 27 comorbidity variables) and work relative value units (RVU) to adjust for surgical complexity (see Table 1). With the exception of morbid obesity, opioid abuse, tobacco use disorder, and chronic anticoagulant use which we define using an individual ICD-10-CM diagnosis code, we define comorbidity variables using CMS Condition Categories (CCs), which are clinically meaningful groupings of many thousands of ICD-10-CM diagnosis codes.

Table 1: Patient-Level Risk-Adjustment Variables

Patient-level variables	Risk-adjusted variables
Demographics	Age (years greater than 65)
Comorbidities	Cancer Disorder of fluid/electrolyte/acid-base Other gastrointestinal disorders Bone/joint/muscle infections/necrosis Rheumatoid and osteoarthritis Dementia Psychiatric disorders Multiple sclerosis Seizure disorders and convulsions Congestive heart failure Ischemic heart disease

Patient-level variables	Risk-adjusted variables
Comorbidities Continued	Hypertension and hypertensive disease Stroke Vascular disease Chronic lung disease Pneumonia Other respiratory disorders Chronic renal disease Chronic ulcers Head injury Major traumatic fracture or internal injury Major symptoms, abnormalities Minor symptoms, signs, findings Morbid obesity Opioid abuse Tobacco use Chronic anticoagulant use
Surgical Procedural Complexity	Work RVU

Full details of the development of the risk standardization model for this measure are available at: <https://qualitynet.cms.gov> > Ambulatory Surgical Centers > Measures > Orthopedic Measure > Methodology.

Data Collection Approach: Medicare administrative claims and enrollment data

Data Accuracy: The administrative claims data used to calculate the measure are maintained by CMS' Office of Information Services. These data undergo additional quality assurance checks during measure development and maintenance.

Measure Analysis Suggestions: None

Sampling: No

Data Reported As: ASC-level 7-day risk-standardized, all-cause, unplanned hospital visit rate following orthopedic surgery

Measure Calculation:

The measure estimates facility-level 7-day risk-standardized unplanned hospital visit rates using hierarchical logistic regression modeling (a form of hierarchical generalized linear modeling [HGLM]). In brief, the approach simultaneously models two levels (patient and facility) to account for the variance in patient outcomes within and between facilities. At the patient level, the model adjusts the log-odds of a hospital visit within 7 days of the surgery for age, procedural factors, and selected clinical covariates. At the facility level, it estimates the facility-specific intercepts as arising from a normal distribution. The facility intercept represents the underlying risk of a hospital visit within 7 days after an orthopedic surgery at an ASC while accounting for patient risk. The facility-specific intercepts also account for the clustering (non-independence) of patients within the same facility. If there were no differences among facilities, then after adjusting for patient risk the facility-specific intercepts would be identical across all facilities.

The statistical modeling approach is described fully in the original technical report:

<https://www.cms.gov/Medicare/Quality-Initiatives-Patient-Assessment-Instruments/HospitalQualityInits/Measure-Methodology.html>.

Selected References:

Cullen KA, Hall MJ, Golosinskiy A, National Center for Health Statistics. *Ambulatory surgery in the United States, 2006*. US Department of Health and Human Services, Centers for Disease Control and Prevention, National Center for Health Statistics; 2009.

Krumholz HM, Brindis RG, Brush JE, et al. Standards for statistical models used for public reporting of health outcomes An American Heart Association scientific statement from the Quality of Care and Outcomes Research Interdisciplinary Writing Group: Cosponsored by the Council on Epidemiology and Prevention and the Stroke Council endorsed by the American College of Cardiology Foundation. *Circulation*. 2006;113(3):456–462.

Normand S-LT, Shahian DM. Statistical and clinical aspects of hospital outcomes profiling. *Statistical Science*. 2007;22(2):206–226.

Centers for Medicare & Medicaid Services (CMS) Urology Ambulatory Surgical Center Procedures Measure

Introduction

This section of the manual includes the Measure Information Form (MIF) for the Risk-Standardized Hospital Visits within 7 days after Urology Ambulatory Surgical Center (ASC) Procedures measure. Yale New Haven Health Services Corporation – Center for Outcomes Research and Evaluation (YNHHSC/CORE) developed the measure for the Centers for Medicare & Medicaid Services (CMS) under a contract supporting the development of ambulatory surgical center measures.

This is an administrative claims-based measure, so there is no data abstraction responsibility on the part of the facility. CMS calculates a facility-level, risk-standardized unplanned hospital visit rate for all eligible facilities. Facilities and their ORYX[®] vendors do not have sufficient data to produce facilities' risk-standardized results. CMS inpatient and outpatient claims data are used to determine whether a beneficiary has had an unplanned hospital visit to any acute care hospital within 7 days of the urology surgery procedure. In addition, CMS extracts and utilizes physician office, inpatient, and outpatient claims data from the year prior to the surgery as well as claims data from the surgery to risk adjust the facility-level results.

CMS has finalized adoption of the measure into the Ambulatory Surgical Center Quality Reporting (ASCQR) Program for payment determination beginning in calendar year 2022.

The information in the following MIF is being provided in the interest of transparency and to promote understanding of the methodology on the part of the facility and vendor communities. Additional background information about the measure methodology can be found in the measure technical report (<https://www.cms.gov/Medicare/Quality-Initiatives-Patient-Assessment-Instruments/HospitalQualityInits/Measure-Methodology.html>). Please submit questions about the measure to the *QualityNet* Question and Answer Tool: https://cmsqualitysupport.servicenowservices.com/qnet_qa.

Measure Information Form

Performance Measure Name: Hospital Visits after Urology Ambulatory Surgical Center Procedures

Measure ID #: ASC-18

Measure Set: CMS Outcome Measures (Claims-Based)

Description: The measure estimates a facility-level rate of risk-standardized, all-cause, unplanned hospital visits within 7 days of a urology surgery at an ASC among Medicare fee-for-service (FFS) patients aged 65 years and older.

Rationale: Nearly 70% of all surgeries in the US are performed in an outpatient setting, with an expanding number and variety of surgeries being performed at stand-alone ASCs (Cullen et al., 2009). This measure will serve to improve transparency, inform patients and providers, and foster quality improvement efforts for hospital visits following urology surgery at ASCs.

Type of Measure: Outcome

Improvement Noted As: A decrease in the facility-level risk-standardized unplanned hospital visit rate.

Numerator Statement:

This outcome measure does not have a traditional numerator and denominator like a process measure (e.g., percentage of adult patients with diabetes aged 18–75 years receiving one or more hemoglobin A1c tests per year); thus, we are using this field to define the outcome. The calculation of the rate is defined below under Measure Calculation.

The outcome for this measure is all-cause, unplanned hospital visits within 7 days of a urology surgery at an ASC. The measure defines a hospital visit as any emergency department (ED) visit, observation stay, or unplanned inpatient admission.

Denominator Statement:

The target population for this measure is Medicare FFS patients aged 65 years and older undergoing outpatient urology surgeries, typically performed by a urologist, at ASCs.

Included Populations:

The target population is Medicare FFS patients aged 65 years and older undergoing outpatient urology surgeries at ASCs who have been enrolled in Part A and Part B Medicare for **up to** 12 months prior to the date of surgery to ensure **the availability of** data for identifying comorbidities for risk adjustment.

The measure includes surgeries that are routinely performed at ASCs, involve increased risk of post-surgery hospital visits, and are routinely performed by urologists. For a list of procedure codes included in the measure cohort, see: [https://qualitynet.cms.gov/> Ambulatory Surgical Centers > Measures > Urology Measure > Methodology](https://qualitynet.cms.gov/>Ambulatory%20Surgical%20Centers>Measures>Urology%20Measure>Methodology).

Exclusion:

1. Surgeries for patients who survived at least 7 days but were not continuously enrolled in Medicare FFS Parts A and B in the 7 days after the surgery. The measure excludes these patients to ensure all patients have full data available for outcome assessment.

Admissions Not Counted in the Outcome (“Planned Admissions”):

Admissions identified as planned by the planned admission algorithm are not counted in the outcome. The “algorithm” is a set of criteria for classifying admissions as planned using Medicare claims. The algorithm identifies admissions that are typically planned and may occur within 7 days of an outpatient surgery. CMS based the planned admission algorithm on three principles:

1. A few specific, limited types of care are always considered planned (transplant surgery, maintenance chemotherapy, rehabilitation);
2. Otherwise, a planned admission is defined as a non-acute admission for a scheduled procedure; and
3. Admissions for acute illness or for complications of care are never planned.

The planned admission algorithm uses a flowchart and four tables of procedures and conditions to operationalize these principles and to classify inpatient admissions as planned. ED visits and observation stays are never considered planned. The flowchart and tables are available in the measure technical report: <https://qualitynet.cms.gov/> Ambulatory Surgical Centers > Measures > Urology Measure > Methodology>.

Risk Adjustment:

The measure’s approach to risk adjustment is tailored to, and appropriate for, a publicly reported outcome measure as articulated in published scientific guidelines (Krumholz et al., 2006; Normand et al., 2007).

The measure uses a two-level hierarchical logistic regression model to estimate facility-level risk-standardized hospital visit rates. This approach accounts for the clustering of patients within facilities and variation in sample size across facilities.

The measure adjusts for differences across facilities in patient demographics, clinical factors, and surgery-related risk. Potential candidate risk factors were identified from related quality measures and the literature; a preliminary list of risk factors was developed and then revised based on a Technical Expert Panel (TEP) and expert clinical input.

The risk-adjustment model has 7 patient-level variables (age and 6 comorbidity variables), number of qualifying procedures, and work relative value units (RVU) to adjust for surgical complexity (see Table 1). With the exception of benign prostatic hyperplasia with obstruction which we define using an individual ICD-10-CM diagnosis code, we define comorbidity variables using CMS Condition Categories (CCs), which are clinically meaningful groupings of many thousands of ICD-10-CM diagnosis codes.

Table 1: Patient-Level Risk-Adjustment Variables

Patient-level variables	Risk-adjusted variables
Demographics	Age (years greater than 65)
Comorbidities	Benign prostatic hyperplasia with obstruction Complications of specified implanted device or graft Poisonings and inflammatory allergic reactions Major symptoms, abnormalities Parkinson's and Huntington's diseases; seizure disorders and convulsions Ischemic heart disease
Number of Qualifying Procedures	Defined as 2 vs. 1, 3, or more vs. 1
Surgical Procedural Complexity	Work RVU

ASCQR Specifications Manual

Encounter dates **01-01-22 (1Q22)** through **12-31-22 (4Q22)** v11.0a

CPT® only copyright 2021 American Medical Association. All rights reserved.

Full details of the development of the risk standardization model for this measure are available at: <https://qualitynet.cms.gov/> > Ambulatory Surgical Centers > Measures > Urology Measure > Methodology.

Data Collection Approach: Medicare administrative claims and enrollment data

Data Accuracy: The administrative claims data used to calculate the measure are maintained by CMS' Office of Information Services. These data undergo additional quality assurance checks during measure development and maintenance.

Measure Analysis Suggestions: None

Sampling: No

Data Reported As: ASC-level 7-day risk-standardized, all-cause, unplanned hospital visit rate following urology surgery

Measure Calculation:

The measure estimates facility-level, 7-day risk-standardized unplanned hospital visit rates using hierarchical logistic regression modeling (a form of hierarchical generalized linear modeling [HGLM]). In brief, the approach simultaneously models two levels (patient and facility) to account for the variance in patient outcomes within and between facilities. At the patient level, the model adjusts the log-odds of a hospital visit within 7 days of the surgery for age, procedural factors, and selected clinical covariates. At the facility level, it estimates the facility-specific intercepts as arising from a normal distribution. The facility intercept represents the underlying risk of a hospital visit within 7 days after a urology surgery at an ASC while accounting for patient risk. The facility-specific intercepts also account for the clustering (non-independence) of patients within the same facility. If there were no differences among facilities, then after adjusting for patient risk the facility-specific intercepts would be identical across all facilities. The statistical modeling approach is described fully in the original technical report: <https://www.cms.gov/Medicare/Quality-Initiatives-Patient-Assessment-Instruments/HospitalQualityInits/Measure-Methodology.html>.

Selected References:

Cullen KA, Hall MJ, Golosinskiy A, National Center for Health Statistics. *Ambulatory surgery in the United States, 2006*. US Department of Health and Human Services, Centers for Disease Control and Prevention, National Center for Health Statistics; 2009.

Krumholz HM, Brindis RG, Brush JE, et al. Standards for statistical models used for public reporting of health outcomes An American Heart Association scientific statement from the Quality of Care and Outcomes Research Interdisciplinary Writing Group: Cosponsored by the Council on Epidemiology and Prevention and the Stroke Council endorsed by the American College of Cardiology Foundation. *Circulation*. 2006;113(3):456–462.

Normand S-LT, Shahian DM. Statistical and clinical aspects of hospital outcomes profiling. *Statistical Science*. 2007;22(2):206–226.

Centers for Medicare & Medicaid Services (CMS) General Surgery Ambulatory Surgical Center Procedures Measure

Introduction

This section of the manual includes the Measure Information Form (MIF) for the Facility-Level-7-Day Hospital Visits after General Surgery Procedures Performed at Ambulatory Surgical Centers (ASC) measure. Yale New Haven Health Services Corporation – Center for Outcomes Research and Evaluation (CORE) developed the measure for the Centers for Medicare & Medicaid Services (CMS) under a contract supporting the development of ambulatory surgical center measures.

This is an administrative claims-based measure, so there is no data abstraction responsibility on the part of the facility. CMS calculates a facility-level, risk-standardized unplanned hospital visit rate for all eligible facilities. Facilities and their ORYX[®] vendors do not have sufficient data to produce facilities' risk-standardized results. CMS inpatient and outpatient claims data are used to determine whether a beneficiary has had an unplanned hospital visit to any acute care hospital within 7 days of the general surgery procedure. In addition, CMS extracts and utilizes physician office, inpatient, and outpatient claims data from the year prior to the surgery as well as claims data from the surgery to risk adjust the facility-level results.

CMS has finalized adoption of the measure into the Ambulatory Surgical Center Quality Reporting (ASCQR) Program for payment determination beginning in calendar year 2024.

The information in the following MIF is being provided in the interest of transparency and to promote understanding of the methodology on the part of the facility and vendor communities. Additional background information about the measure methodology can be found in the measure technical report (<https://www.cms.gov/Medicare/Quality-Initiatives-Patient-Assessment-Instruments/HospitalQualityInits/Measure-Methodology.html>). Please submit questions about the measure to the *QualityNet* Question and Answer Tool: https://cmsqualitysupport.servicenowservices.com/qnet_qa

Measure Information Form

Performance Measure Name: Facility-Level-7-Day Hospital Visits after General Surgery Procedures

Measure ID #: ASC-19

Measure Set: CMS Outcome Measures (Claims-Based)

Description: The measure estimates a facility-level rate of risk-standardized, all-cause, unplanned hospital visits within 7 days of a general surgery at an ASC among Medicare fee-for-service (FFS) patients aged 65 years and older.

Rationale: Nearly 70% of all surgeries in the US are performed in an outpatient setting, with an expanding number and variety of surgeries being performed at stand-alone ASCs (Cullen et al., 2009). This measure will serve to improve transparency, inform patients and providers, and foster quality improvement efforts for hospital visits following general surgery at ASCs.

Type of Measure: Outcome

Improvement Noted As: A decrease in the facility-level risk-standardized unplanned hospital visit rate.

Numerator Statement:

This outcome measure does not have a traditional numerator and denominator like a process measure (e.g., percentage of adult patients with diabetes aged 18–75 years receiving one or more hemoglobin A1c tests per year); thus, we are using this field to define the outcome. The calculation of the rate is defined below under Measure Calculation.

The outcome for this measure is all-cause, unplanned hospital visits within 7 days of a general surgery at an ASC. The measure defines a hospital visit as any emergency department (ED) visit, observation stay, or unplanned inpatient admission.

Denominator Statement:

The target population for this measure is Medicare FFS patients aged 65 years and older undergoing outpatient general surgeries, typically performed by a general surgeon, at ASCs.

Included Populations:

The target population is Medicare FFS patients aged 65 years and older undergoing outpatient general surgeries at ASCs who have been enrolled in Part A and Part B Medicare for the 12 months prior to the date of surgery to ensure adequate data for identifying comorbidities for risk adjustment.

The measure includes surgeries that are routinely performed at ASCs, involve increased risk of post-surgery hospital visits, and are routinely performed by general surgeons. For a list of procedure codes included in the measure cohort, see: <https://qualitynet.cms.gov/> > Ambulatory Surgical Centers > Measures > General Surgery Measure Dry Run > Measure Methodology

Exclusion:

1. Surgeries for patients who survived at least 7 days but were not continuously enrolled in Medicare FFS Parts A and B in the 7 days after the surgery. The measure excludes these patients to ensure all patients have full data available for outcome assessment.

Admissions Not Counted in the Outcome (“Planned Admissions”):

Admissions identified as planned by the planned admission algorithm are not counted in the outcome. The “algorithm” is a set of criteria for classifying admissions as planned using Medicare claims. The algorithm identifies admissions that are typically planned and may occur within 7 days of an outpatient surgery. CMS based the planned admission algorithm on three principles:

1. A few specific, limited types of care are always considered planned (major organ transplant, rehabilitation, or maintenance chemotherapy);
2. Otherwise, a planned admission is defined as a non-acute admission for a scheduled procedure; and
3. Admissions for acute illness or for complications of care are never planned.

The planned admission algorithm uses a flowchart and four tables of procedures and conditions to operationalize these principles and to classify inpatient admissions as planned. ED visits and observation stays are never considered planned. The flowchart and tables are available in the measure technical report, see: <https://qualitynet.cms.gov/> > Ambulatory Surgical Centers > Measures > General Surgery Measure Dry Run > Measure Methodology.

Risk Adjustment:

The measure’s approach to risk adjustment is tailored to, and appropriate for, a publicly reported outcome measure as articulated in published scientific guidelines (Krumholz et al., 2006; Normand et al., 2007).

The measure uses a two-level hierarchical logistic regression model to estimate facility-level risk-standardized hospital visit rates. This approach accounts for the clustering of patients within facilities and variation in sample size across facilities.

The measure adjusts for differences across facilities in patient demographics, clinical factors, and surgery-related risk. Potential candidate risk factors were identified from related quality measures and the literature; a preliminary list of risk factors was developed and then revised based on a Technical Expert Panel (TEP) and expert clinical input.

The risk-adjustment model has 19 patient-level variables (age and 18 comorbidity variables), six procedure types, and work relative value units (RVU) to adjust for surgical complexity (see Table 1). We define comorbidity variables using CMS Condition Categories (CCs), which are clinically meaningful groupings of many thousands of ICD-10-CM diagnosis codes.

Table 1: Patient-Level Risk-Adjustment Variables

Patient-level variables	Risk-adjusted variables
Demographics	Age (years greater than 65)
Procedure Type	Abdomen and its contents Alimentary tract Breast Skin/soft tissue Wound Vascular
Comorbidities	Other benign tumors Liver or biliary disease Intestinal obstruction or perforation Dementia or senility Psychiatric disorders Other significant central nervous system (CNS) disease Ischemic heart disease Specified arrhythmias and other heart rhythm disorders Stroke Chronic lung disease Pneumonia Dialysis or sever chronic kidney disease Benign prostatic hyperplasia Cellulitis, local skin infection Major traumatic fracture or internal injury Complicates of care Chronic anticoagulant use Opioid abuse
Surgical Procedural Complexity	Work RVU

Full details of the development of the risk standardization model for this measure are available at <https://qualitynet.cms.gov/> > Ambulatory Surgical Centers > Measures > General Surgery Measure Dry Run > Measure Methodology.

Data Collection Approach: Medicare administrative claims and enrollment data

Data Accuracy: The administrative claims data used to calculate the measure are maintained by CMS's Office of Information Services. These data undergo additional quality assurance checks during measure development and maintenance.

Measure Analysis Suggestions: None

Sampling: No

Data Reported As: ASC-level 7-day risk-standardized, all-cause, unplanned hospital visit rate following general surgery

Measure Calculation: The measure estimates facility-level, 7-day risk-standardized unplanned hospital visit rates using hierarchical logistic regression modeling (a form of hierarchical generalized linear modeling [HGLM]). In brief, the approach simultaneously models two levels (patient and facility) to account for the variance in patient outcomes within and between facilities. At the patient level, the model adjusts the log-odds of a hospital visit within 7 days of the surgery for age, procedural factors, and selected clinical covariates. At the facility level, it estimates the facility-specific intercepts as arising from a normal distribution. The facility intercept represents the underlying risk of a hospital visit within 7 days after a general surgery at an ASC while accounting for patient risk. The facility-specific intercepts also account for the clustering (non-independence) of patients within the same facility. If there were no differences among facilities, then after adjusting for patient risk the facility-specific intercepts would be identical across all facilities. The statistical modeling approach is described fully in the original technical report: <https://www.cms.gov/Medicare/Quality-Initiatives-Patient-Assessment-Instruments/HospitalQualityInits/Measure-Methodology.html>

Selected References:

Cullen KA, Hall MJ, Golosinskiy A, National Center for Health Statistics. *Ambulatory surgery in the United States, 2006*. US Department of Health and Human Services, Centers for Disease Control and Prevention, National Center for Health Statistics; 2009.

Krumholz HM, Brindis RG, Brush JE, et al. Standards for statistical models used for public reporting of health outcomes An American Heart Association scientific statement from the Quality of Care and Outcomes Research Interdisciplinary Writing Group: Cosponsored by the Council on Epidemiology and Prevention and the Stroke Council endorsed by the American College of Cardiology Foundation. *Circulation*. 2006;113(3):456–462.

Normand S-LT, Shahian DM. Statistical and clinical aspects of hospital outcomes profiling. *Statistical Science*. 2007;22(2):206–226.

Measure Information Form

Performance Measure Name: COVID-19 Vaccination Coverage Among Health Care Personnel (HCP COVID-19 Vaccination)

Measure ID #: ASC-20

Measure Set: Measures submitted via a web-based tool (NHSN)

Description: For more information about the National Healthcare Safety Network (NHSN) measures, see the resources located at <http://www.cdc.gov/nhsn/>.

Annual data submission period: See the timeline posted to [QualityNet.cms.gov](https://www.qualitynet.org) for this measure; select Ambulatory Surgical Centers (ASC) then click the Learn More dial, then select Participation from the banner options.

Direct questions regarding NHSN training, enrollment, and submission to: NHSN@cdc.gov.

Denominator: Number of HCP eligible to work in the ASC for at least 1 day during the self-selected week, excluding persons with contraindications to COVID-19 vaccination.

Numerator: cumulative number of HCP eligible to work in at the ASC for at least 1 day during the self-selected week and who received a complete vaccination course against COVID-19 using an FDA-authorized or FDA-approved vaccine for COVID-19 (whether the FDA issued an approval or EUA).¹⁶⁰ A complete vaccination course is defined under the specific FDA authorization and may require multiple doses or regular revaccination.

FAQs on Reporting COVID-19 Vaccination Data can be found at <https://www.cdc.gov/nhsn/hps/weekly-covid-vac/faqs.html>.

Sampling Specifications

ASC-9, ASC-11*, and ASC-13 – The sampling size specifications for ASC-9, ASC-11*, and ASC-13 have been established and are specified in the table below.

Table 3: Sample size requirements per year per ASC for Endoscopy/Polyp Surveillance (ASC-9) or Cataracts (ASC-11*) measures, or Normothermia Outcome (ASC-13)**

Population Per Year	0–900
Yearly Sample Size	63
Quarterly Sample Size	16
Monthly Sample Size	6
Population Per Year	≥ 901
Yearly Sample Size	96
Quarterly Sample Size	24
Monthly Sample Size	8

*Submission of data for ASC-11 is voluntary.

**For ASCs with fewer than 63 cases, the total population of cases is required.

Quality Data Transmission

Introduction

This section of the manual is provided to highlight the unique data transmission specifications for the ambulatory surgical center measure data for the Centers for Medicare & Medicaid Services (CMS) and the CMS Clinical Data Warehouse.

Guidelines for Submission of Data

Data collected for CMS are transmitted to the CMS Clinical Data Warehouse. All data submitted are required to meet transmission requirements. The file layout requirements are included in this section.

Ambulatory Surgical Center Web-Based Measure Batch Submission File Layout

The Comma-Separated Value (CSV) file layout is one section of content with rows defining unique facilities and columns defining measure data. Please refer to the Ambulatory Surgical Center Web-Based Batch Submission file layout for an example and details of required fields.

ASC_PROVIDER_NPI – National Provider ID

ASC_PYR – Payment Year

ASC_9_POP_SIZE – What was your facility's Total population?

ASC_9_SAMP_SIZE – What was your facility's sample size?

ASC_9_SAMP_FREQ – What was your facility's sampling frequency?

ASC_9_NUMERATOR – Patients who have a recommended follow-up interval of at least 10 years for repeat colonoscopy documented in their colonoscopy report.

ASC_9_DENOMINATOR – All patients aged 50 years and older receiving screening colonoscopy without biopsy or polypectomy.

ASC_11_POP_SIZE – What was your facility's Total Population?

ASC_11_SAMP_SIZE – What was your facility's sample size?

ASC_11_SAMP_FREQ – What was your facility's sampling frequency?

ASC_11_NUMERATOR – Patients who had an improvement in visual function achieved within 90 days following cataract surgery, based on completing both a pre-operative and post-operative visual function instrument.

ASC_11_DENOMINATOR – All patients 18 years and older who had cataract surgery and completed both a pre-operative and post-operative visual function instrument.

ASC_13_POP_SIZE – What was your facility's Total Population?

ASC_13_SAMP_SIZE – What was your facility's sample size?

ASC_13_SAMP_FREQ – What was your facility's sampling frequency?

ASC_13_NUMERATOR – Surgery patients with a body temperature equal to or greater than 96.8 Fahrenheit/36 Celsius recorded within fifteen minutes of Arrival in PACU.

ASC_13_DENOMINATOR – All patients, regardless of age, undergoing surgical procedures under general or neuraxial anesthesia of greater than or equal to 60 minutes duration.

ASC_14_NUMERATOR – All cataract surgery patients who had an unplanned anterior vitrectomy.

ASC_14_DENOMINATOR – All cataract surgery patients.

Data Upload Process

Data upload is done through the Hospital Quality Reporting (HQR) External Files Online Tool.

All data transmitted pass through the following process:

1. The file(s) are checked for proper naming convention and file type.
 - a. The correct file naming convention is ASC_WBM_PY20YY_mm_dd_yyyy.csv where YY represent the last two digits of the applicable Payment Year, and mm_dd_yyyy represents the upload date.
2. The file(s) are evaluated upon successful upload and checked for errors in content.
 - a. The system sends an upload confirmation email to the registered email for the logged-in account.
 - b. The system checks the file for errors, logging each error in the file, and then rejects the file if any errors are found. The error log is attached to the rejection notification email with one error per line.
 - c. If no errors are found, the system uploads the file and applies the data to the given Payment Year.
3. Note that there is no ADD, UPDATE, or DELETE action-code associated with the file. To correct errors, you can either:
 - a. Enter the Web-Based Data Collection Tool for each individual facility and update the values as appropriate, or
 - b. Upload a corrected CSV file which will overwrite any existing values.

Appendix A: Tools and Resources

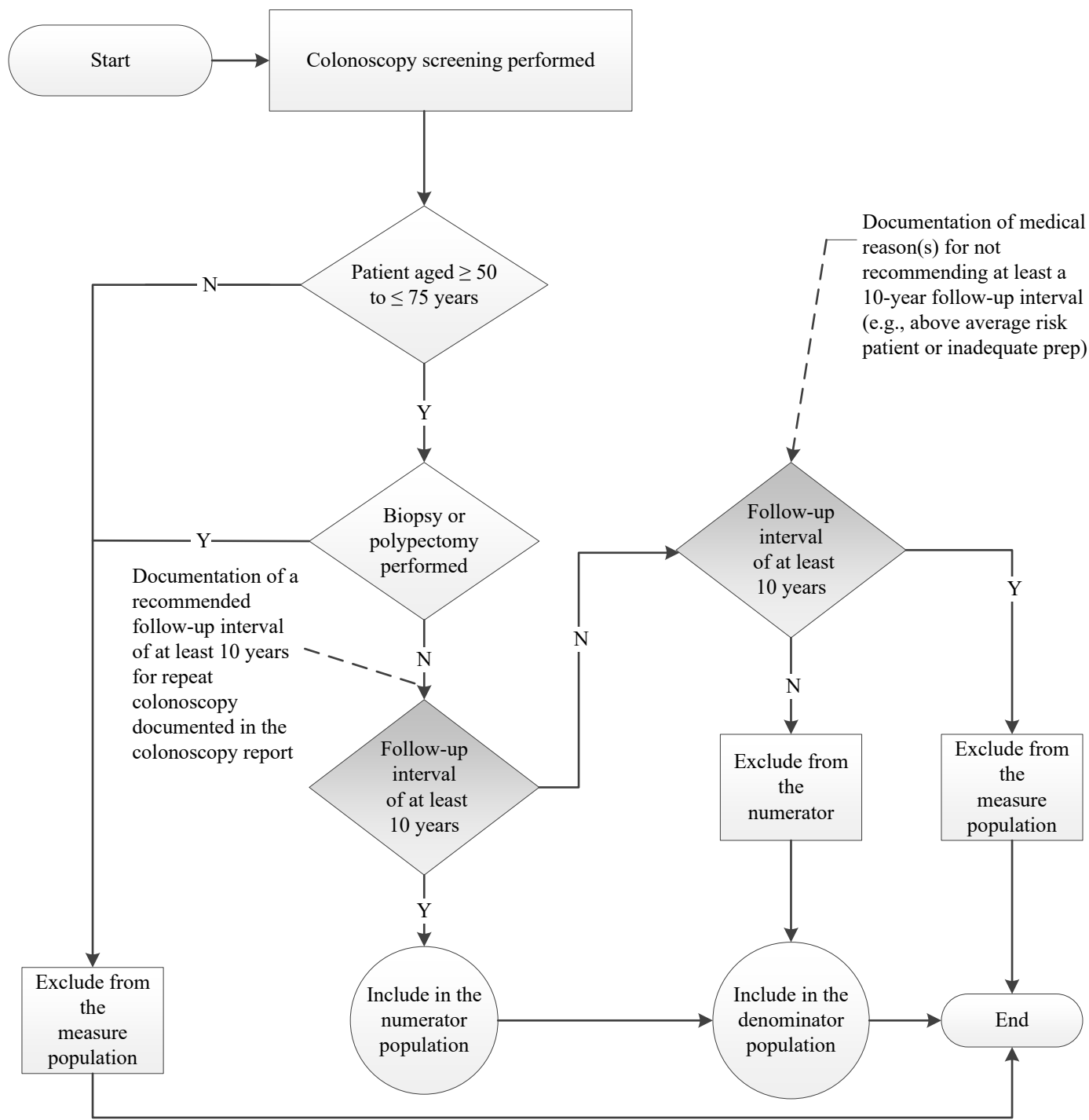
Alphabetical Tools and Resources List

Measure Name	Page #
ASC-9 : Appropriate Follow-up Interval for Normal Colonoscopy in Average Risk Patients-Algorithm	A-2
ASC-9: Appropriate Follow-up Interval for Normal Colonoscopy in Average Risk Patients-Data Collection Tool	A-3
ASC-9: Appropriate Follow-up Interval for Normal Colonoscopy in Average Risk Patients-Denominator Codes	A-4
ASC-9: Appropriate Follow-up Interval for Normal Colonoscopy in Average Risk Patients-Fact Sheet	A-5
ASC-11: Improvement in Patient’s Visual Function within 90 Days Following Cataract Surgery-Data Collection Log	A-6
ASC-13: Normothermia Outcome-Algorithm	A-7
ASC-13: Normothermia Outcome-Example Questions	A-8

ASC-9: Appropriate Follow-Up Interval for Normal Colonoscopy in Average Risk Patients

Numerator Statement: Patients who had a recommended follow-up interval of at least 10 years for repeat colonoscopy documented in their colonoscopy report

Denominator Statement: All patients ≥ 50 to ≤ 75 years of age receiving screening colonoscopy without biopsy or polypectomy



ASC-9: Appropriate Follow-up Interval for Normal Colonoscopy in Average Risk Patients Data Collection Tool

Answer the questions in the tables below to determine whether colonoscopy patients fall into the measures indicated, keeping in mind that ASC-9 looks forward to recommendations for future care.

ASC-9		
ASC-9: Appropriate Follow-up Interval for Normal Colonoscopy in Average Risk Patients		
Measure Criteria	Circle One	Denominator/Numerator Determination
1. Patient had a screening colonoscopy, without biopsy or polypectomy, and is ≥ 50 to ≤ 75 years of age on date of encounter	Yes \longrightarrow No \longrightarrow	Include in <i>denominator</i> population, continue to 1(a) Exclude from <i>denominator</i> population
a) Documentation of medical reason(s) for not recommending at least a 10-year follow-up interval (e.g., above average risk patient or inadequate prep or if age is documented as a medical reason)	Yes \longrightarrow No \longrightarrow	Exclude from <i>denominator</i> population Continue to Question 2
2. Recommended follow-up interval of at least 10 years for repeat colonoscopy is documented in colonoscopy report	Yes \longrightarrow No \longrightarrow	Include in <i>numerator</i> population Exclude from <i>numerator</i> population

ASC-9: Endoscopy/Polyp Surveillance: Appropriate Follow-up Interval for Normal Colonoscopy in Average Risk Patients Denominator Codes

- For ASC-9: Endoscopy/Polyp Surveillance: Appropriate Follow-Up Interval for Normal Colonoscopy in Average Risk Patients, the codes appropriate for use for the denominator are listed below.
- These codes are derived from the measure information form for ASC-9 that can be found in the Specifications Manual.
- **Denominator Criteria:**
 - Patients aged ≥ 50 and ≤ 75 on date of encounter
 - and**
 - Z12.11:** Encounter for screening for malignant neoplasm of colon
 - and**
 - 44388:** Colonoscopy through Stoma
 - 45378:** Diagnostic/screening colonoscopy for non-Medicare patients
 - G0121:** Screening colonoscopy for other Medicare patients
 - without**
 - Modifier **52:** Reduced Services—Under certain circumstances a service or procedure is partially reduced or eliminated at the physician’s discretion
 - Modifier **53:** Discontinued Procedure—Under certain circumstances the physician may elect to terminate a surgical or diagnostic procedure
 - Modifier **73:** Discontinued Out-Patient Hospital/Ambulatory Surgery Center (ASC) Procedure Prior to the Administration of Anesthesia—Due to extenuating circumstances or those that threaten the well-being of the patient
 - Modifier **74:** Discontinued Out-Patient Hospital/Ambulatory Surgery Center (ASC) Procedure After Administration of Anesthesia—Due to extenuating circumstances or those that threaten the well-being of the patient
 - without**
 - Z83.71:** Family history of colonic polyps
 - Z86.010:** Personal history of colonic polyps
 - Z80.0:** Family history of malignant neoplasm of gastrointestinal tract
 - Z85.038:** Personal history of malignant neoplasm of large intestine

ASC-9: Endoscopy/Polyp Surveillance: Appropriate Follow-up Interval for Normal Colonoscopy in Average Risk Patients-Fact Sheet

Description: Percentage of patients aged 50 to 75 years of age receiving a screening colonoscopy without biopsy or polypectomy who had a recommended follow-up interval of at least 10 years for repeat colonoscopy documented in their colonoscopy report.

Denominator Statement: All patients aged 50 to 75 years of age receiving screening colonoscopy without biopsy or polypectomy

Numerator Statement: Patients who had a recommended follow-up interval of at least 10 years for repeat colonoscopy documented in their colonoscopy report

When abstracting for this measure:

- **Do** use the final colonoscopy report to abstract the recommended follow-up interval. If your facility utilizes another report that is equivalent to or contains the final colonoscopy report, utilize this report for abstraction.
- **Do** exclude a case based on age if there is documentation indicating no follow-up colonoscopy is needed or recommended **and** patient's age is identified as the reason.
- **Do** use any medical reason, such as a diagnosis, symptom, or condition that is documented in the medical record to exclude a case from the denominator population **only** when the recommended follow-up interval is less than 10 years. Please note that you must have **both** an interval of less than 10 years and the medical reason documented in order to use this as an exclusion from the denominator. Some examples are:
 - Above average risk patient
 - Inadequate prep
 - Family history of colon cancer
 - Diverticulitis documented in the medical record

Please remember that medical reasons are at the discretion of the physician.

- **Do not** include records with CPT/HCPCS modifiers 52, 53, 73, or 74.
- **Do not** use time frames, such as “5–10 years,” “many,” “prn,” or “when symptomatic,” since they are not acceptable terms for the recommended follow-up interval of at least 10 years.

ASC-11: Cataracts: Improvement in Patient’s Visual Function within 90 Days Following Cataract Surgery-Data Collection

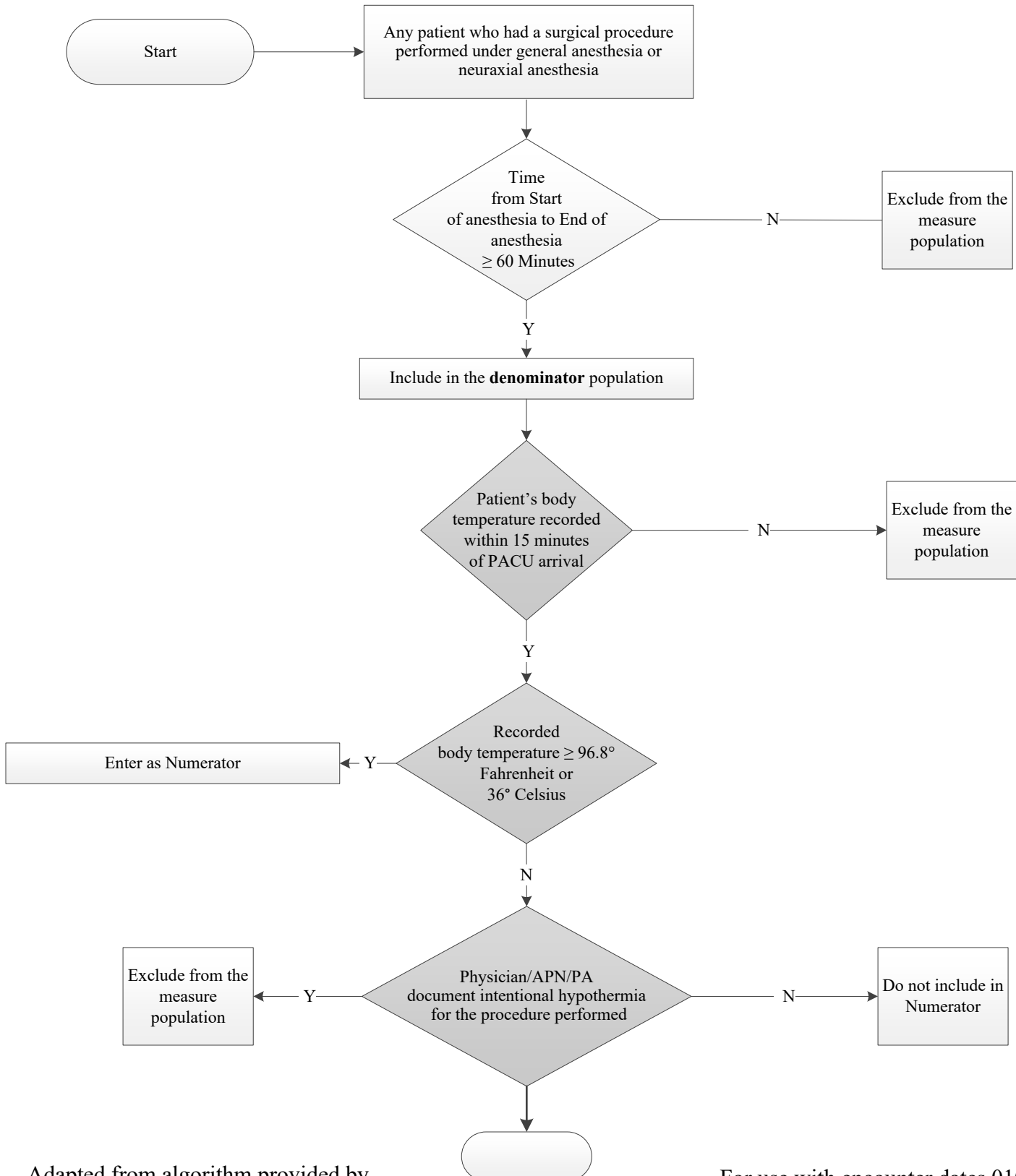
When collecting data for ASC-11 (Cataracts: Improvement in Patient’s Visual Function within 90 Days Following Cataract Surgery):

- A facility may choose to sample data monthly, quarterly, or annually following the sampling guidelines in the Specifications Manual.
- ASC-11 requires that patients complete both a pre- and post-operative survey using the *same* visual function tool. Patients who do not complete a pre-op survey and post-op survey are excluded from the measure. Surveys may be completed in person, by mail, by phone, or another method of the hospital’s choosing.
- The data collection instrument is specified as an assessment tool that has been appropriately validated for the population for which it is being used. The survey tool measures visual function, not visual acuity. A visual assessment tool may not be utilized. Examples of tools for visual function assessment are found in the Measure Information Form in the Specifications Manual under the Definition for Survey.
- Designate a sheet for data collection for each month, quarter, or year, and indicate the sample frequency on the log.
- At this time, ASC-11 remains a voluntary measure. Facilities that choose not to report the measure will not be subject to a reduction in their payment update for Calendar Year 2023.
- Any data submitted for the measure will be publicly reported.

ASC-13: Normothermia Outcome

Numerator Statement: Surgery patients with a body temperature equal to or greater than 96.8 Fahrenheit/36 Celsius recorded within fifteen minutes of arrival in PACU

Denominator Statement: All patients, regardless of age, undergoing surgical procedures under general or neuraxial anesthesia of greater than or equal to 60 minutes duration



ASC-13: Normothermia Outcome Example Questions

Step 1: Identify surgical patients with general or neuraxial (epidural or spinal) anesthesia equal to or greater than 60 minutes in duration (**Denominator**).

- Did the patient have a general or neuraxial anesthetic?
 - Cases with strictly sedation or local anesthesia would not be included.
- What was the Start time of anesthesia?
 - If there is no Start time, do **not** include patient in the Denominator.
 - If both Start time and Induction time are documented, use Start time.
 - If there is no Start time but there is an Induction time, do **not** include patient in the Denominator.
- What is the End time of anesthesia?
 - If there is no End time, do NOT include patient in the Denominator.
 - If there is no End time documented, do NOT include patient in the Denominator.

If the duration between Start time and End time is equal to or greater than 60 minutes, the patient can be included in the Denominator.

Step 2: Determine how many patients in the Denominator population had the required body temperature within 15 minutes of arriving in the PACU (**Numerator**).

If the patient had a body temperature greater than or equal to **96.8°F or 36°C** 15 minutes after arrival in the PACU, then the patient can be included in the Numerator.

Step 3: Determine if the number of cases meet the Sampling Specifications.

If the population is 0–900, a sample of 63 may be used: If the population is greater than or equal to 901, a sample of at least 96 should be used. If the population is fewer than 63 cases, the total population of cases is required.

Example: An ASC performed **903** surgical procedures. The number of procedures exceeds 901 and can be sampled using at least 96 cases.

Scenario 1

Medicare patient has surgical procedure using **general** anesthesia.

Start time of anesthesia was **0615**.

End time of anesthesia was documented on the operating room (OR) form at **0720**.

Patient's arrival to PACU was documented at **0725**.

Body temperature was **36°C** at **0730**.

Denominator criteria met? Yes

Numerator criteria met? Yes

✓ The patient received **general** anesthesia for the duration of **65** minutes and had a documented body temperature of **36°C** within **15** minutes of arrival in the PACU. This patient should be included in this measure.

Scenario 2

Patient started **neuraxial** anesthetic (spinal) for a surgical procedure at **1000**.

End time of anesthesia was documented at **1100**.

Patient arrived into the PACU at **1105**.

At **1110** patient's temperature was documented as **96.5°F**.

Patient's temperature was rechecked at **1115** and documented as **97°F**.

Denominator criteria met? Yes

Numerator criteria met? Yes

✓ The patient received **neuraxial** anesthesia for 60 minutes and had a documented body temperature of **97°F** within 15 minutes of arrival in the PACU. This patient meets the criteria for both the numerator and denominator.

Scenario 3

Private pay patient received **general** anesthesia.

Anesthetist documented the start time as **0730**.

The anesthetist documented the end time as **0825**.

Patient's arrival time into PACU was documented as **0832**.

Patient's body temperature at **0837** was **97.8°F**.

Denominator criteria met? No

✗ The anesthesia duration time is not equal to or greater than **60** minutes; therefore, this patient should **not** be included in the measure.

Scenario 4

Medicare patient started epidural in pre-op holding at **0800**.

Patient entered the operating suite at **0810**.

Documented End time of anesthesia was **0905**.

Patient's body temperature recorded at **0920** was **96.5°F**.

Nurse Practitioner documented intentional hypothermia for the procedure.

Denominator criteria met? No

✗ The documentation of intentional hypothermia is a Denominator Exclusion and excludes this case from the population; therefore, this patient should **not** be included in the measure.

Scenario 5

Patient received **general** anesthesia for surgical procedure.

Anesthetist documented Start time at **1010**.

No documented End time.

Patient's arrival in the PACU is recorded at **1115**.

Patient's body temperature was recorded at **1125** at **97°F**.

Denominator criteria met? No

✗ Arrival time at PACU is only used to determine if patient's body temperature meets the duration and required temperature for inclusion in the Numerator. Anesthesia End time cannot be substituted with Arrival at PACU time; therefore, this patient should **not** be included in the measure.

Appendix B: Preview Section

The Preview Section provides information on new measures. The information provided in this section should not be programmed or submitted. The measure(s) identified in this section are not currently collected.